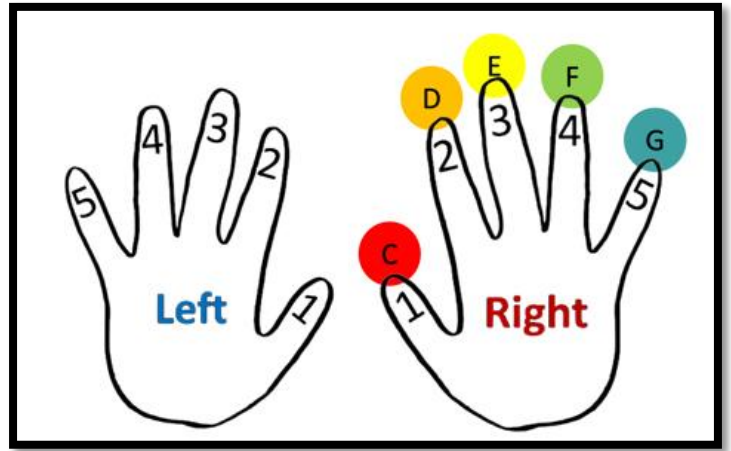


Christopher Columbus

Musical notation for the song "Christopher Columbus". It consists of two staves in 4/4 time. The first staff has notes G, F, E, D, C, D, E, C, D, E. The second staff has notes E, D, C. Notes are color-coded: G (blue), F (green), E (yellow), D (orange), C (red), D (orange), E (yellow), C (red), D (orange), E (yellow). The second staff starts with a "5" above the first note, indicating a fifth finger placement. The piece ends with a double bar line and repeat dots.

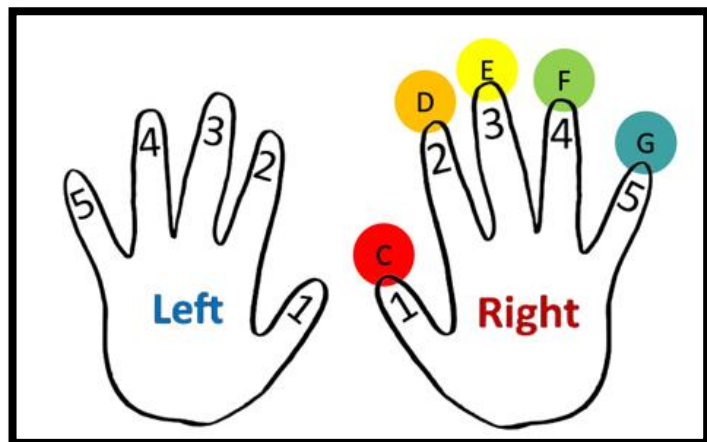


Robin Hood



C C C D E E D D E E

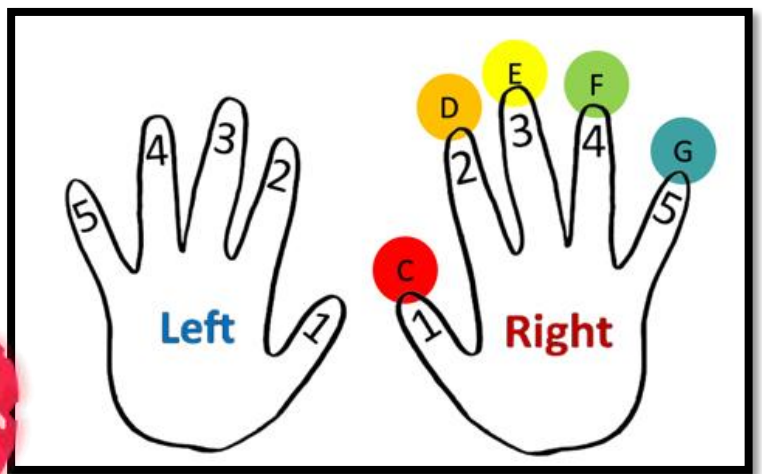
5 C C C D E E D F E D C



Who's On Third?

C C E D D F E E G G E F D

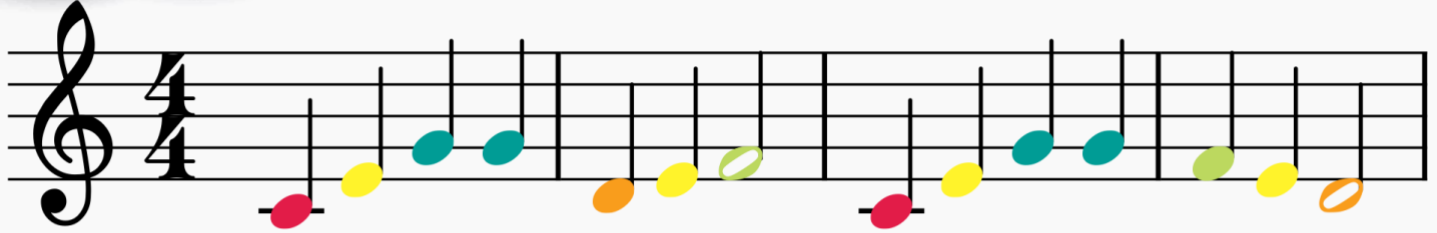
5 E E G E F D C



Love Somebody

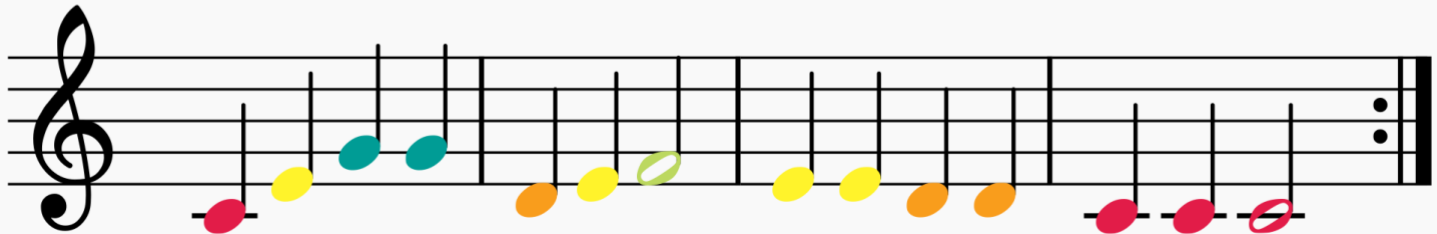
C E G G D E F

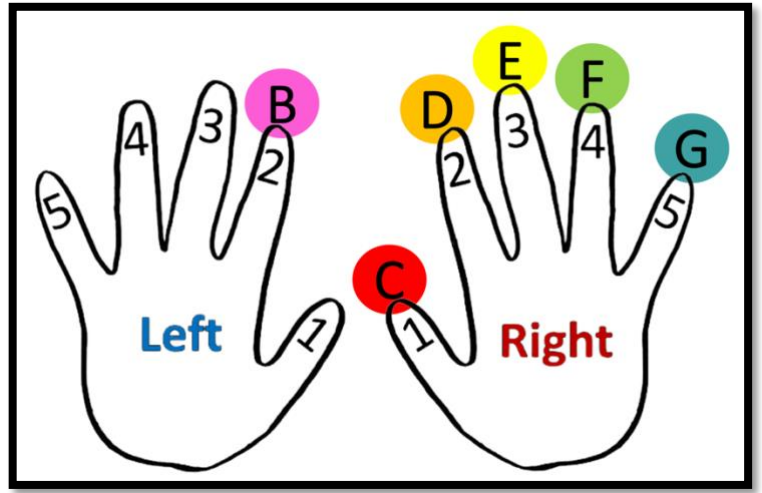
F E D



5

E E D D C

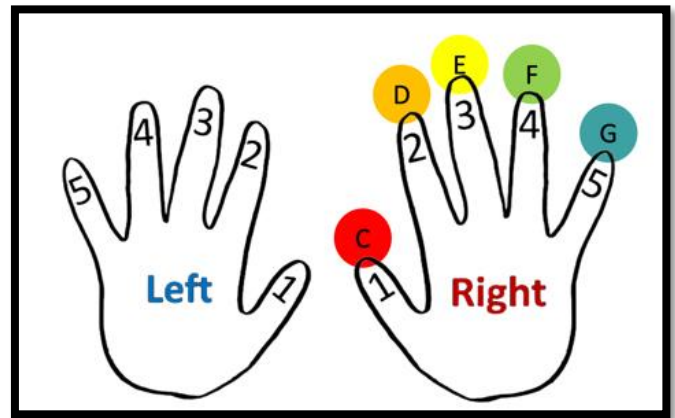




Skip To My Lou

E C E G D B D F

5 D F E D C

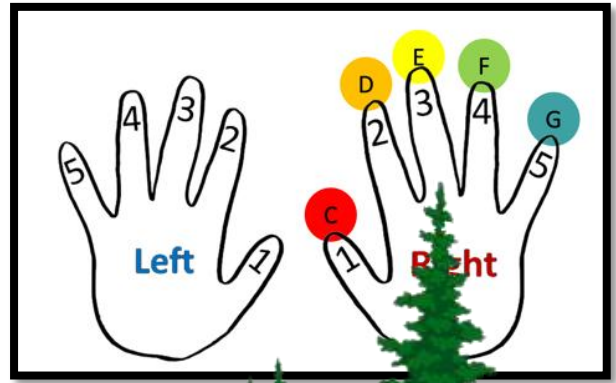


The Donkey

C D E E D C D E C

5 E F G G F E F G E G

9 C D G C



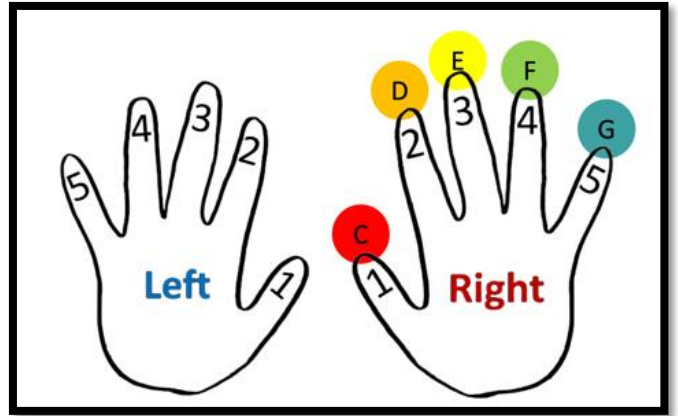
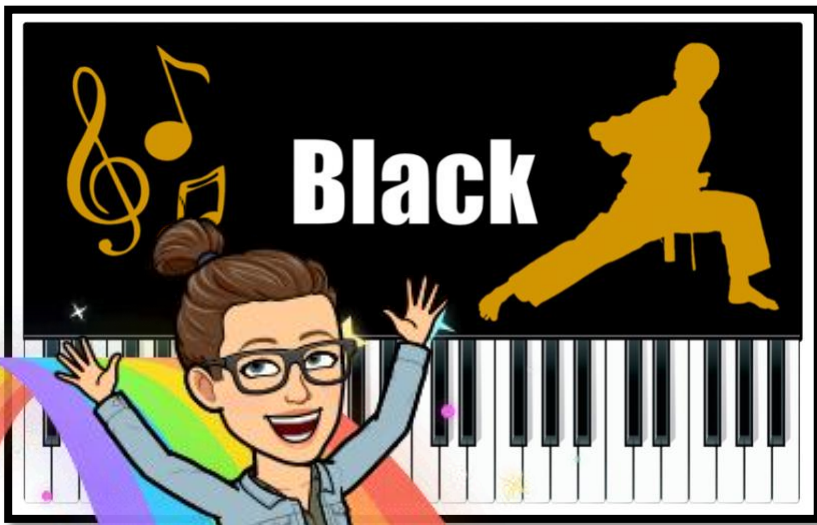
The Quiet River

C E G E C E G E D F D C

5

9 D E C E D E C E

13 C E G E D F D C

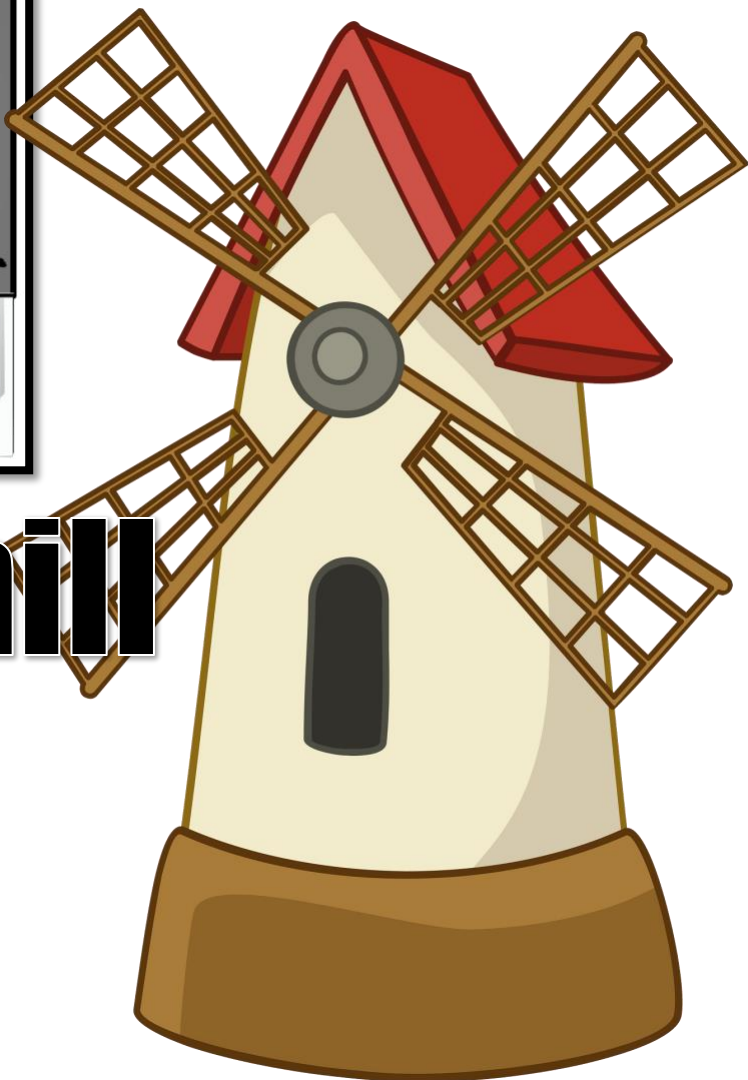


The Rainbow

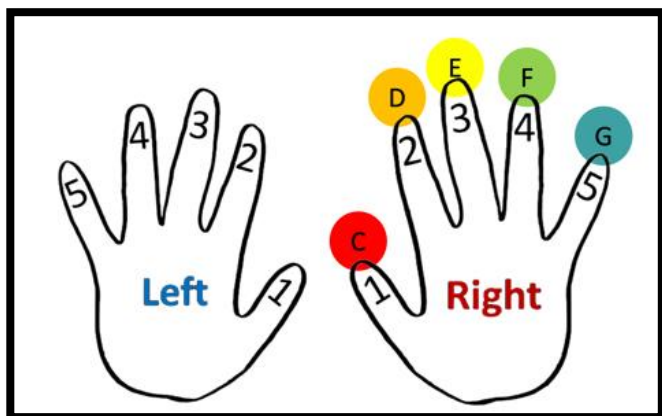
D E G E D G D C F E D

6 C D D

12 E G G F E D E D C D E C



The Windmill

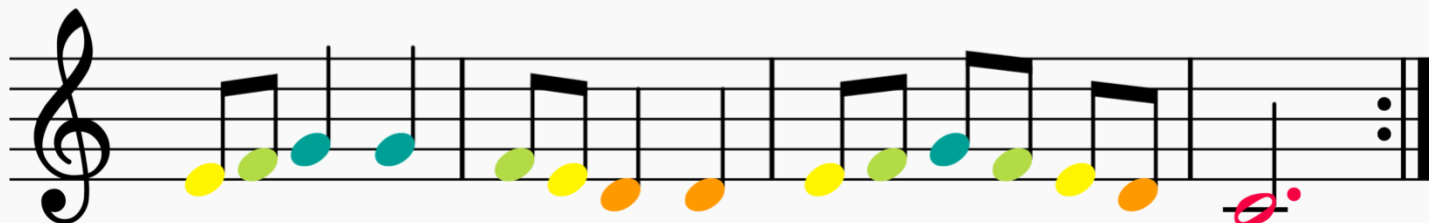


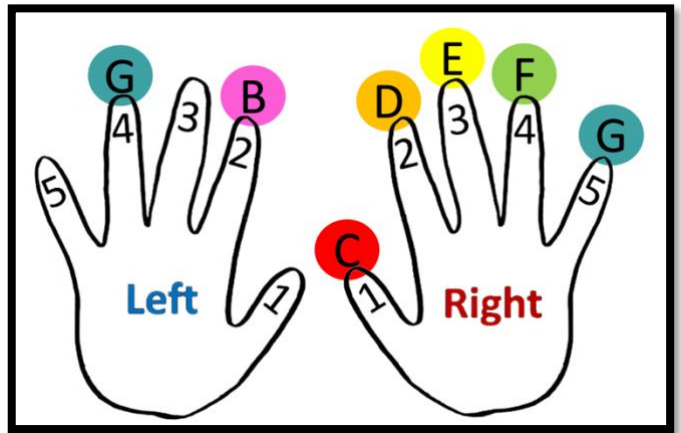
E F G G F E D D E F G G D



5

E F G F E D C





Simple Gifts

G G C C D E C E F

3 G G F E D C D C D E D B G G

6 C B C D E D D E F G E

8 D D F E D D C C C C